



9J600510-02

SILVER LINING CLOUD™  
entertainment car mirror



OWNER’S MANUAL

© Skip Hop, Inc.  
SKIP HOP, SILVER LINING CLOUD and  
MUST-HAVES MADE BETTER are trademarks  
owned by Skip Hop, Inc. All rights reserved.

100 W 33 ST, STE 1125, NY, NY 10001  
In the US: 888.782.9548  
www.skiphop.com



**CAUTION:** Changes or modifications not expressly approved by the party responsible for compliance could void the user's authority to operate the equipment.

This device complies with part 15 of the FCC Rules. Operation is subject to the following two conditions:  
(1) This device may not cause harmful interference, and (2) this device must accept any interference received, including interference that may cause undesired operation.

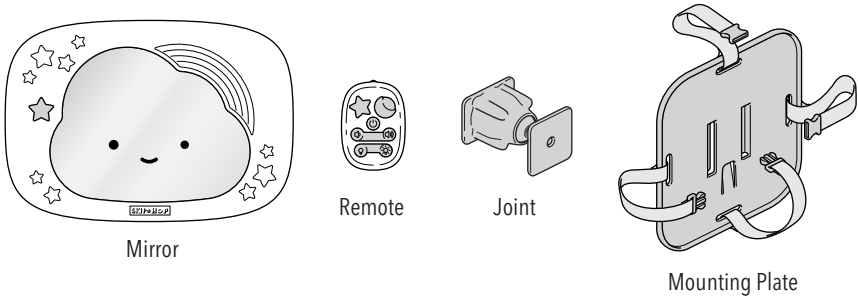
**NOTE:** This equipment has been tested and found to comply with the limits for a Class B digital device, pursuant to part 15 of the FCC Rules. These limits are designed to provide reasonable protection against harmful interference in a residential installation. This equipment generates, uses and can radiate radio frequency energy and, if not installed and used in accordance with the instructions, may cause harmful interference to radio communications. However, there is no guarantee that interference will not occur in a particular installation. If this equipment does cause harmful interference to radio or television reception, which can be determined by turning the equipment off and on, the user is encouraged to try to correct the interference by one or more of the following measures:

- Reorient or relocate the receiving antenna.
- Increase the separation between the equipment and receiver.
- Connect the equipment into an outlet on a circuit different from that to which the receiver is connected.
- Consult the dealer or an experienced radio/TV technician for help.

CAN ICES-3 (B)/NMB-3(B)

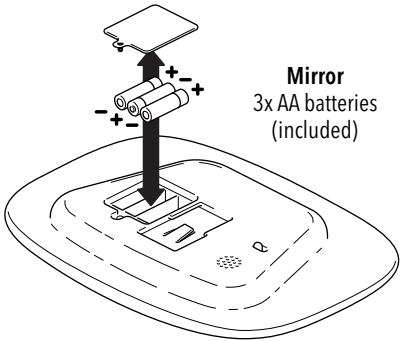
PLEASE RETAIN THIS INFORMATION FOR FUTURE  
REFERENCE. ADULT ASSEMBLY REQUIRED.

CONTENTS:

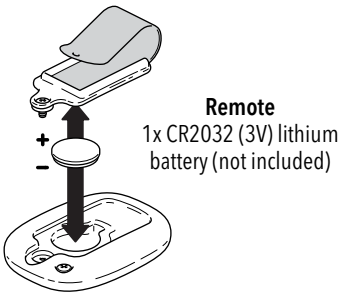


INSERTING THE BATTERIES:

1. Loosen the battery door screw using a Phillips head screwdriver, and remove door.
  2. Insert battery with correct polarity.
  3. Position the battery door securely back into place and tighten with a screwdriver.
- \*Batteries should be replaced by an adult.**  
**\*Do not use without battery door properly attached.**

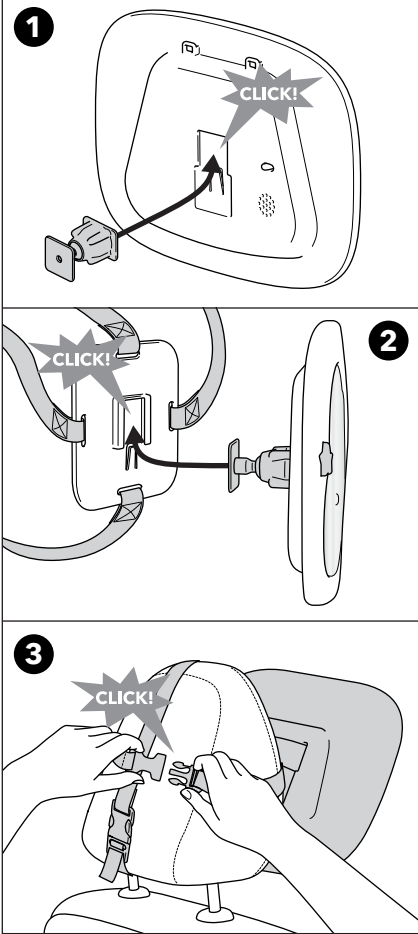


Mirror  
3x AA batteries  
(included)



Remote  
1x CR2032 (3V) lithium  
battery (not included)

ASSEMBLY:



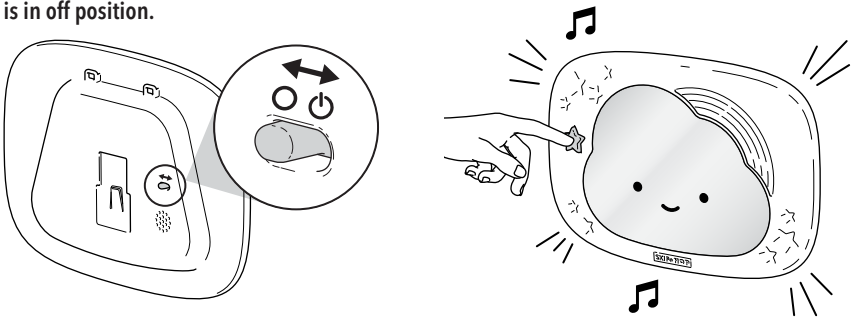
**STOP** Ensure straps are firmly tightened before use.

INSTRUCTIONS FOR USE: MIRROR

Slide power switch on the back of the mirror to turn ON or OFF. To prolong battery life, turn OFF when not used for prolonged periods.

**\*Remote will not work if slide power switch is in off position.**

Press Star button to play songs.  
(Press to cycle through songs,  
long press to stop)



INSTRUCTIONS FOR USE: REMOTE

Slide power switch on the back of the mirror to turn on.

Press to Play 10 Songs

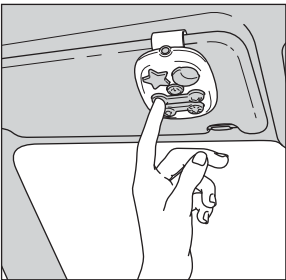
(Press to cycle through songs, long press to stop)

- Sun In The Morning
- Chip Hype
- Bell Hop
- Arp Pop
- Kind Pop
- Twinkle Twinkle Little Star
- Star Doggy
- Brahms' Lullaby
- Hush Little Baby
- Eine Kleine Nachtmusik

Press for 3 Soothing Sounds

(Press to cycle through sounds, long press to stop)

- Standby (Stops/starts lights and sound)
- Volume Control (Off to full volume)
- Turn Lights On/Off (Only works in song mode)



CLEANING AND CARE:

Clean with dry cloth only. To prolong the life of this product, remove batteries when it is in storage. Do not drop on hard surfaces or expose to moisture. Do not submerge in water.

**⚠ WARNING:** Contains button or coin cell battery. Hazardous if swallowed—see instructions. A swallowed Button or Coin Cell Battery can cause serious internal chemical burns in as little as two hours and lead to death. Dispose of used batteries immediately. Keep new and used batteries away from children. If you think batteries might have been swallowed or placed inside any part of the body, seek immediate medical attention.

BATTERY INFORMATION

- Always dispose of used batteries properly. See section on safety and disposal information.
- Batteries are to be inserted with the correct polarity.
- Do not burn batteries.
- Non-rechargeable batteries are not to be recharged.
- Rechargeable batteries are only to be charged under adult supervision.
- Rechargeable batteries are to be removed from the toy before being charged.
- Exhausted batteries are to be removed from the toy.
- The supply terminals are not to be short-circuited.
- Different types of batteries or new and used batteries are not to be mixed.
- Do not mix alkaline, standard (carbon-zinc), or rechargeable batteries.



CONSUMER INFORMATION: SAFETY AND DISPOSAL

At end of product life remove batteries from product by following the battery replacement instructions. Substances used in batteries pose potential environmental and health effects. Do not mix waste batteries with other waste. Keep waste batteries separate. Do not dispose of by landfill or by incineration. Return waste batteries to your point of purchase or recycle center. Recycle all waste batteries per local regulation. Do not dispose of Waste Electrical Electronic Equipment (WEEE), including batteries, in unsorted municipal waste; collect separately. Dispose of at WEEE collection sites per local regulation. WEEE contains chemicals that are hazardous to the environment and human health. The end-user's participation is critical to the success of WEEE collection.